


# Introduction To CPSC 203

James Tam

James Tam

## Administrative (James Tam)

- Contact Information

- Office: ICT 707 
- Email: [tamj@cpsc.ucalgary.ca](mailto:tamj@cpsc.ucalgary.ca)

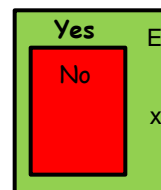
- Office hours

- Office hours: Mon 11:00 – 11:50, Wed 13:00 – 13:50
- If I'm not in my office give me a few minutes or check the lecture room.
- Email: (any time)
- Appointment: email, phone or call
- Drop by for urgent requests (but no guarantee that I will be in if it's outside of my office hours!)



← My Office

ICT 7th



James Tam

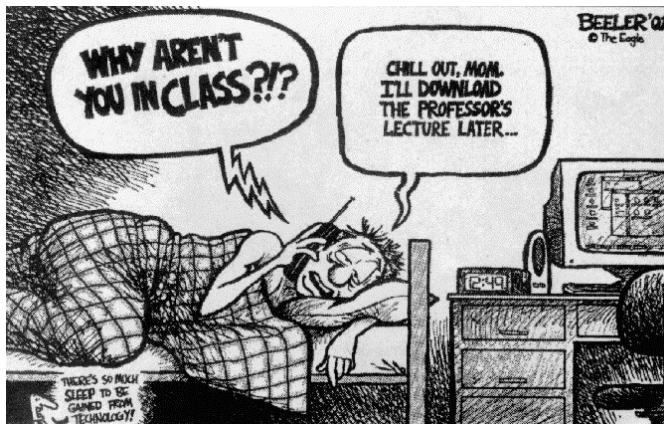
## Course Resources

- Required resources:
  - D2L (Desire '2' learn) course management website: [d2l.ualgary.ca](http://d2l.ualgary.ca)
    - Course notes (link can be found in D2L):  
<http://pages.cpsc.ualgary.ca/~tamj/203>
  - (Main course text) "*Peeking into Computer Science*"

James Tam

## How To Use The Course Resources

- They are provided to support and supplement this class.
- Neither the course notes nor the text book are meant as a substitute for regular class attendance.



James Tam

## How To Use The Course Resources

- They are provided to support and supplement this class.
- Neither the course notes nor the text book are meant as a substitute for regular class attendance.



James Tam

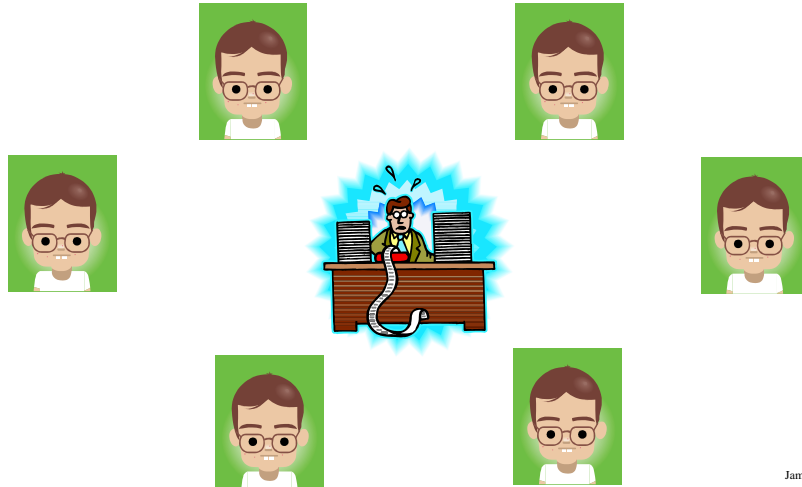
## How To Use The Course Resources (3)

- What you are responsible for:
  - Keeping up with the content in class which includes the topics covered but also announcements or assignments whether you were present in the class or not.
  - If you are absent, then you are responsible for getting the information from the other students in class.
  - (I won't be able to repeat the lecture content if you are absent...there's just too many of you in all my lectures to make it practical).

James Tam

## How To Use The Course Resources (4)

- However, after you've caught up by talking with a classmate:
  - Ask for help if you need it
  - There are no dumb questions



James Tam

## CPSC 203: What It Is And Isn't About

- The focus of this course is on using computer programs (as opposed to writing them).
  - Two assignments involve *using pre-created programs*: spreadsheet, database.
- The key issue is how to use computer programs to solve problems, rather than focusing on all the details of how to use a particular program
  - Former: You need to convince prospective investors to invest in your startup company. What tools would you use to gather the data and make a compelling argument? (Spreadsheet? Database? Web page? Electronic presentation software? Write a program or app yourself?)
  - Latter ('key issue' in the heading above) what series of menu options and selections would be needed to calculate an average and standard deviation using Excel.
  - Develop knowledge and skills for the former case does require teaching you some of the latter but it's not the focus of this course.

James Tam

## CPSC 203: What It Is And Isn't About (2)

- Why is the course this way?
  - Employer XYZ wants to hire an Access © database developer or someone familiar with SQL queries using Oracle © now.
- Things change, get used to it.
  - The 'hot' program or app of today may not be so hot tomorrow.
  - Learning to 'think' and "problem solve" can help you adapt to changes.
  - Focusing less on a particular technology or program may make you more open to consider alternatives.

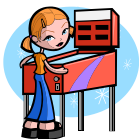
James Tam



### Typical 203 Student?



- There isn't one!
- This course is typically taken by students from diverse backgrounds and departments.
- As much as possible it includes skills and technical knowledge that can be applied to different disciplines.



James Tam

## Typical 203 Student? (2)

- Common computer skills coming into the course:
  - You know what a computer is!
  - You've used a computer in some form (e.g., turn on, turn off, open a file, gone online etc.)
  - You have experience with the simple features found in commonly used applications (specifically email, web browsers, text editing using a word processor).

James Tam

## What If 203 Isn't "Enough" For You?

- Think this course is too easy?



- There are other introductory courses that may be of interest.
- Both are introductions to problem solving by *writing/creating computer programs*.
  - Program writing ("programming") is a major component.
  - CPSC 217: For non-Computer Science majors
  - CPSC 231: For Computer Science majors

James Tam

## Evaluation Components (Exert: Course Outline<sup>1</sup>)

**Midterm Exam** 20 %

(Wednesday March 12, 7 - 9 PM)

**Final Exam** 40 %

*The final exam is cumulative (includes midterm material)*

**Lecture participation Quizzes (TopHat Monocle)** 10%

- Exams: open book but probably similar to exams in other courses ('paper' exams written outside of class time)
- Lecture participation quizzes: electronically answer via SMS or via a webpage (during lecture)

<sup>1</sup> Full outline: [http://pages.cpsc.ucalgary.ca/~tamj/203/course\\_outline.pdf](http://pages.cpsc.ucalgary.ca/~tamj/203/course_outline.pdf)

James Tam

## Evaluation Components (Exert: Course Outline<sup>1</sup>)

**Tutorials** 30 %

- 2 Take-home assignments (7.5% each) 15%
- 2 tutorial quizzes (7.5% each) 15%

- Marked by TAs
- Any questions about the assignments and lab quizzes should be directed to your TA first
- Take home assignments: you will work on these in groups with several weeks to complete them.
- Tutorial quizzes: during a tutorial each student will have to complete a series of tasks in spreadsheet (first quiz) and a database (second quiz), individual work only.

<sup>1</sup> Full outline: [http://pages.cpsc.ucalgary.ca/~tamj/203/course\\_outline.pdf](http://pages.cpsc.ucalgary.ca/~tamj/203/course_outline.pdf)

James Tam

## **Questions About Tutorial Marks<sup>1</sup>**

- Enquire with your TA
- Cannot enquire after 3 weeks of the date the assignment/quiz marks are posted

<sup>1</sup> Full outline: [http://pages.cpsc.ucalgary.ca/~tamj/203/course\\_outline.pdf](http://pages.cpsc.ucalgary.ca/~tamj/203/course_outline.pdf)

James Tam

## **Microsoft Office Version<sup>1</sup>**

- Microsoft Office 2007 (or newer) is required
- Your submission must also work on a Windows machine.
- It is your responsibility to make sure that your submission works on the machines in MS 236 and MS 237.
- We mark whatever you submit on a Windows machine using MS Office 2010.

<sup>1</sup> Full outline: [http://pages.cpsc.ucalgary.ca/~tamj/203/course\\_outline.pdf](http://pages.cpsc.ucalgary.ca/~tamj/203/course_outline.pdf)

James Tam



## Suspecting Plagiarism<sup>1</sup>

- Your TAs are **required** to report any suspicious cases
  - Even if suspicion is mild
- Cases are handled by the Department Head
  - Not the instructor nor the TA
- If convicted, you will be reported to your Dean

<sup>1</sup> Full outline: [http://pages.cpsc.ucalgary.ca/~tamj/203/course\\_outline.pdf](http://pages.cpsc.ucalgary.ca/~tamj/203/course_outline.pdf)

James Tam

## Exam Format (Exert: Course Outline<sup>1</sup>)

- Mainly based on lecture material
- Will contain tutorial (computer lab) material as well
- Have two parts:
  1. Multiple choice
  2. Long answer (higher weight)
    - Solve problems
- Open book (text book and additional post-it notes)
- No other aids will be allowed (not even 'simple' calculators)

<sup>1</sup> Full outline: [http://pages.cpsc.ucalgary.ca/~tamj/203/course\\_outline.pdf](http://pages.cpsc.ucalgary.ca/~tamj/203/course_outline.pdf)

James Tam

## Lecture Participation Quizzes

- Based on the lecture material
- Can occur any time during the lecture (not announced beforehand)
- Grading...you can choose! (As a class that is...)

James Tam

## Assignment Details (Exert: Course Outline<sup>1</sup>)

- Group work (Groups of size 3)
- Groups must change between assignments
- Take-home
- Involved
  - Make use of the given time
- Similar submissions will be investigated for plagiarism
- Take-home assignments: **No extensions** under any circumstances
- Formed around the time when the assignment is released
- You must iron your team problems
- We can help, as long as the problem is reported no later than 10 days before the assignment is due
  - Otherwise, we will not listen to complaints

<sup>1</sup> Full outline: [http://pages.cpsc.ucalgary.ca/~tamj/203/course\\_outline.pdf](http://pages.cpsc.ucalgary.ca/~tamj/203/course_outline.pdf)

James Tam

## **Tutorial Quiz Details (Exert: Course Outline<sup>1</sup>)**

- Based on Tutorial material
- Hands-on
- Individual work
- If you miss a quiz, a makeup or an alternative arrangement can be granted with a valid documented excuse

<sup>1</sup> Full outline: [http://pages.cpsc.ucalgary.ca/~tamj/203/course\\_outline.pdf](http://pages.cpsc.ucalgary.ca/~tamj/203/course_outline.pdf)

James Tam

## **Marking Cutoffs (Exert: Course Outline<sup>1</sup>)**

95 and up	A+
Above 90 and below 95	A
Above 85 and below 90	A-
Above 80 and below 85	B+
Above 75 and below 80	B
Above 70 and below 75	B-
Above 65 and below 70	C+
Above 60 and below 65	C
Above 55 and below 60	C-
Above 50 and below 55	D+
Above 40 below 50	D
Below 40	F

James Tam

## Feedback



Let me know how things are going in the course:

- Am I covering the material too slowly or too quickly.
- Can you read the slides and my hand writing.
- Can you hear me in the class.
- Etc.



James Tam